

ERRATUM

Open Access



Erratum to: Temporal dynamics of anxiety phenotypes in a dental pulp injury model

Lin Shang^{1,2,3*}, Tian-Le Xu^{3*}, Fei Li^{2*}, Jiansheng Su^{1*} and Wei-Guang Li^{3*}

Erratum to: *Mol Pain* (2015) 11:40

DOI 10.1186/s12990-015-0040-3

Following the publication of our original article we noticed that an error was introduced during the assembly of Fig. 3a (Fig. 1a here). In the original figure, the computer-generated exploration path of DPI mice at day

1 was incorrectly presented, as we mistakenly included a duplication of the exploration path representing day 14. The corrected figure appears below.

*Correspondence: shanglin7777@gmail.com; xu-happiness@shsmu.edu.cn; feili@shsmu.edu.cn; sjs@tongji.edu.cn; wgli@shsmu.edu.cn

¹ Laboratory of Oral Biomedical Science and Translational Medicine, School of Stomatology, Tongji University, Shanghai 200072, China

² Department of Developmental and Behavioral Pediatrics, Shanghai Institute of Pediatric Translational Medicine, Shanghai Children's Medical Center, Ministry of Education-Shanghai Key Laboratory of Children's Environmental Health, Shanghai Jiao Tong University School of Medicine, Shanghai 200129, China

³ Discipline of Neuroscience and Department of Anatomy, Histology and Embryology, Institute of Medical Sciences, Shanghai Jiao Tong University School of Medicine, 280 South Chongqing Road, Shanghai 200025, China

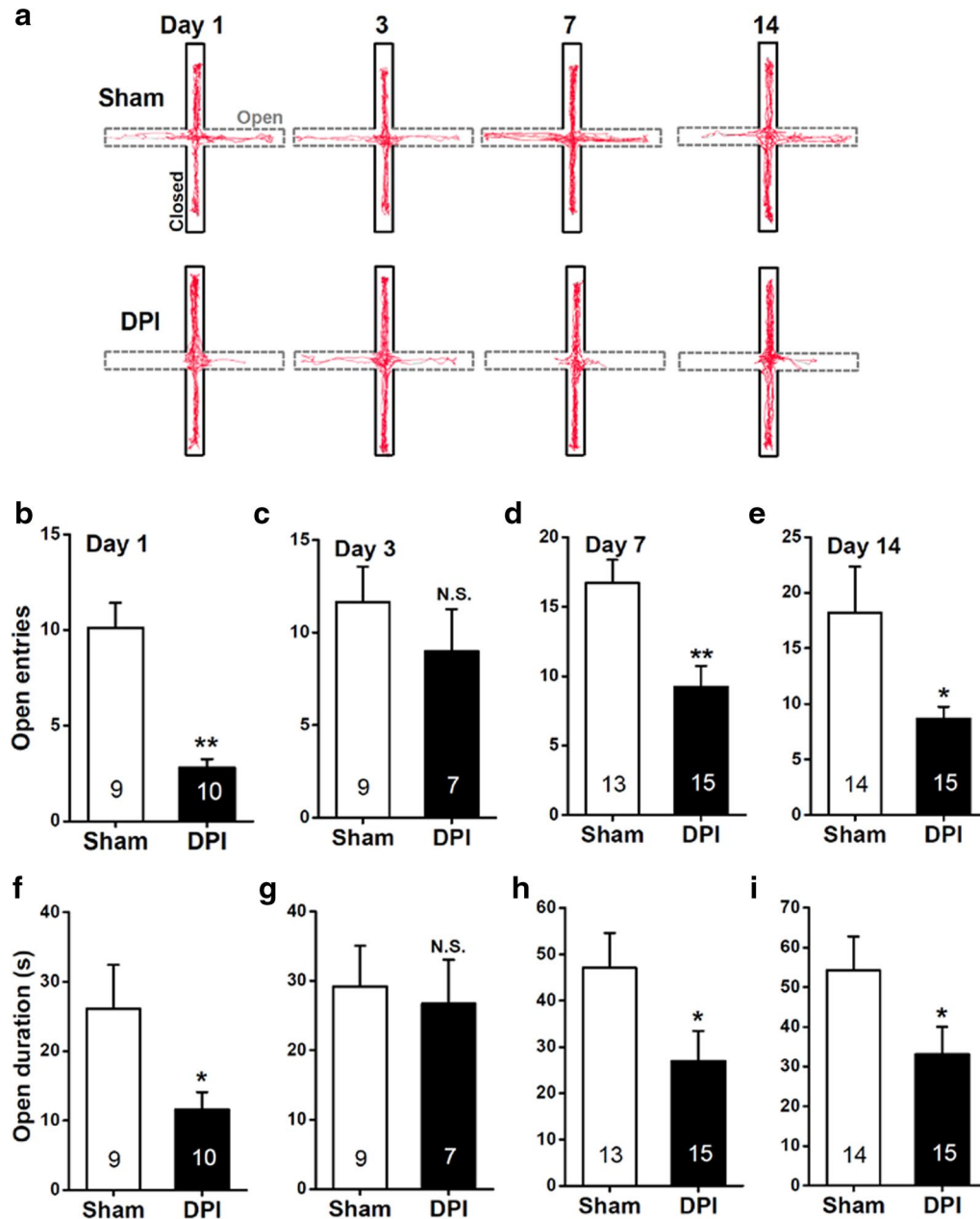


Fig. 1 Measurements of anxiety-like behavior in the EPM after sham or DPI surgery. **a** Computer-generated exploration paths of representative sham and DPI mice in the EPM test. Open, open arms (dashed line, grey); closed, closed arms (black). **b–i** The bar summary compares the number of entries (**b–e**) and the amount of time spent (**f–i**) in the open arms between the sham and DPI mice. All values are expressed as mean \pm SEM. $n = 7–15$ mice for each group shown in the figure. * $P < 0.05$, ** $P < 0.01$, N.S. non-significant difference, sham vs. DPI, unpaired Student's t test

Author details

¹ Laboratory of Oral Biomedical Science and Translational Medicine, School of Stomatology, Tongji University, Shanghai 200072, China. ² Department of Developmental and Behavioral Pediatrics, Shanghai Institute of Pediatric Translational Medicine, Shanghai Children's Medical Center, Ministry of Education-Shanghai Key Laboratory of Children's Environmental Health, Shanghai Jiao Tong University School of Medicine, Shanghai 200129, China. ³ Discipline of Neuroscience and Department of Anatomy, Histology and Embryology, Institute of Medical Sciences, Shanghai Jiao Tong University School of Medicine, 280 South Chongqing Road, Shanghai 200025, China.

The online version of the original article can be found under doi:[10.1186/s12990-015-0040-3](https://doi.org/10.1186/s12990-015-0040-3).

Received: 14 September 2015 Accepted: 19 September 2015
Published online: 07 October 2015